



CENTRAL MANGROVE WETLAND — *Potential Ramsar Site UK42004*

CAYMAN ISLANDS GOVERNMENT- Department of the Environment

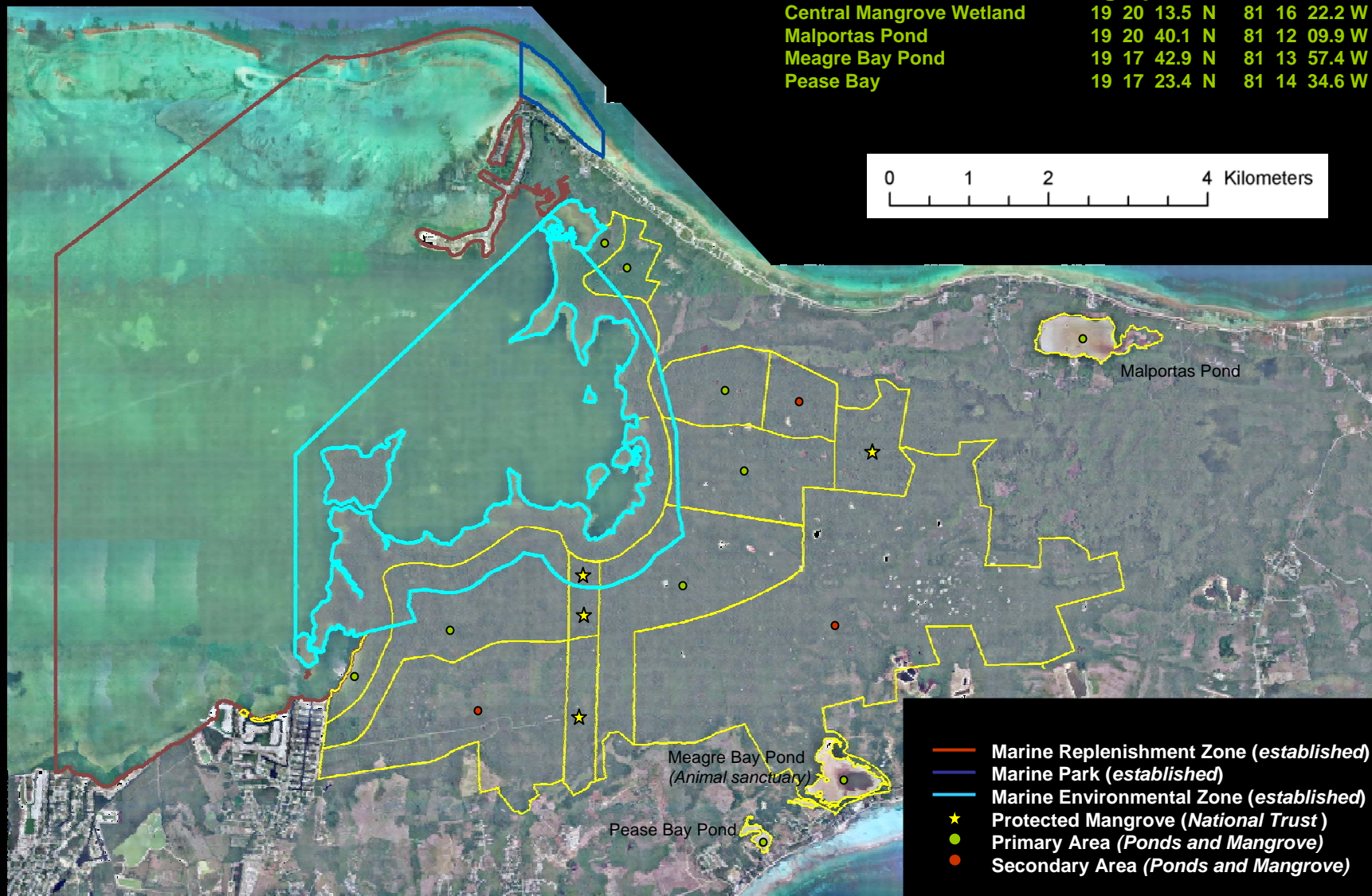
PO BOX 486GT, Marco Giglioli Building, Grand Cayman

TEL (345) 949 8469 EMAIL DOE@gov.ky



Geographical coordinates

Central Mangrove Wetland	19 20 13.5 N	81 16 22.2 W
Malportas Pond	19 20 40.1 N	81 12 09.9 W
Meagre Bay Pond	19 17 42.9 N	81 13 57.4 W
Pease Bay	19 17 23.4 N	81 14 34.6 W



- Marine Replenishment Zone (established)
- Marine Park (established)
- Marine Environmental Zone (established)
- ★ Protected Mangrove (National Trust)
- Primary Area (Ponds and Mangrove)
- Secondary Area (Ponds and Mangrove)